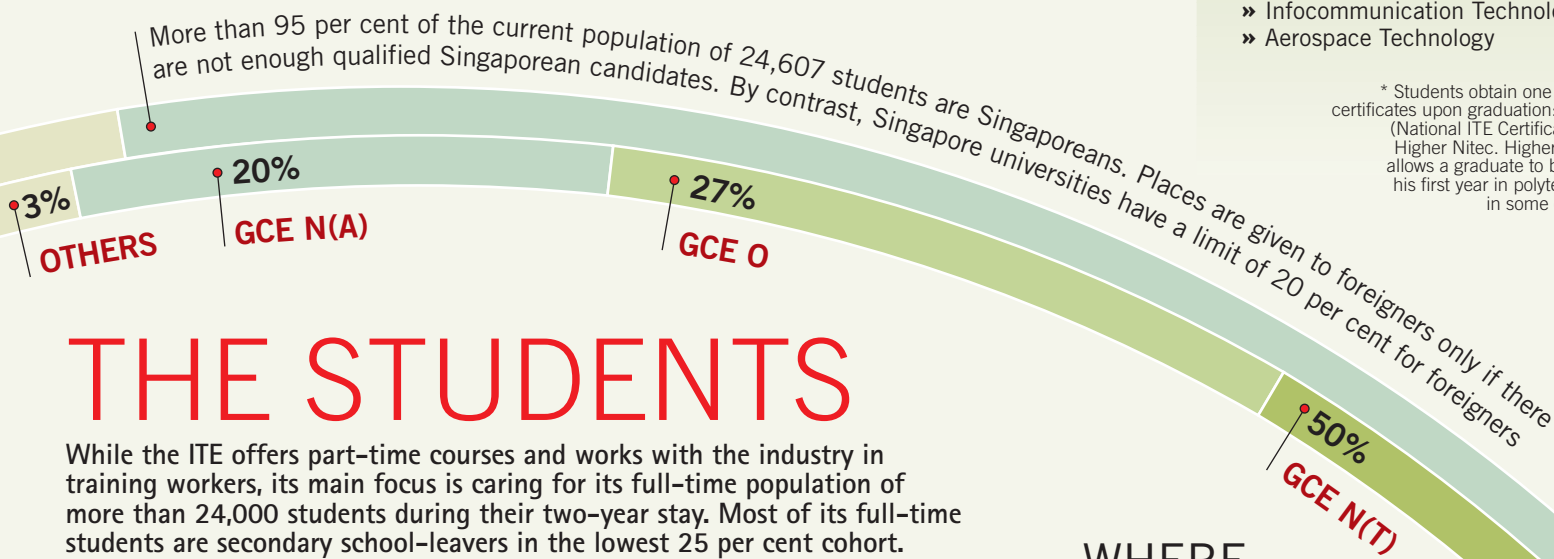


HEARTLAND CAMPUS

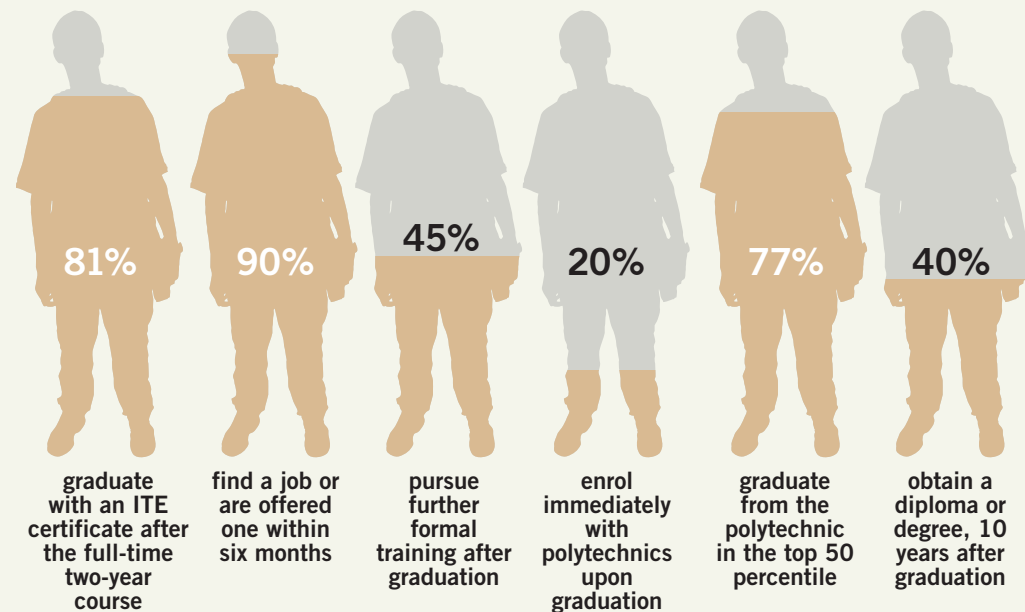
The ITE operates its one system in three clusters of colleges: ITE College East, ITE College West and ITE College Central. Each college specialises in certain areas although the curriculum is structured within four core fields or schools: engineering, business and services, infocomm technology, and applied and health sciences.



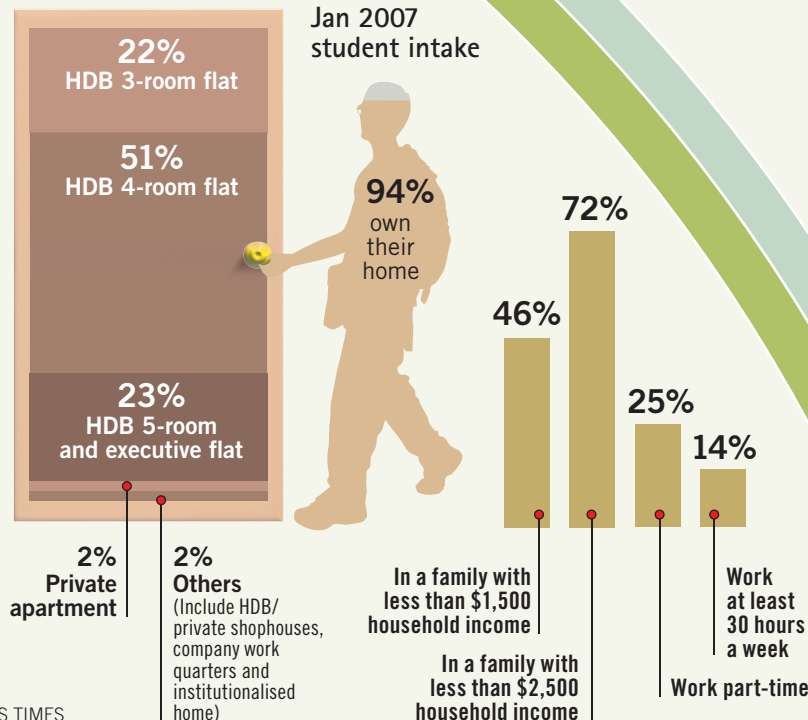
THE STUDENTS

While the ITE offers part-time courses and works with the industry in training workers, its main focus is caring for its full-time population of more than 24,000 students during their two-year stay. Most of its full-time students are secondary school-leavers in the lowest 25 per cent cohort.

HOW THEY PERFORM



WHERE THEY LIVE



THE TEACHERS

ITE currently has some 1,300 lecturers

Lecturer to student ratio (1:14)

Degree and above 45% (9 PhDs)

Diploma 50%

Others 5%

THE COURSES

The 54 full-time courses offered by ITE are skill-based with 60-70% of the curriculum on practical and industrial skills and the remaining 30-40% on theory.

MOST POPULAR COURSES

- » Service Skills (Office)
- » Precision Engineering
- » Nursing
- » Infocommunication Technology
- » Aerospace Technology

LATEST COURSES

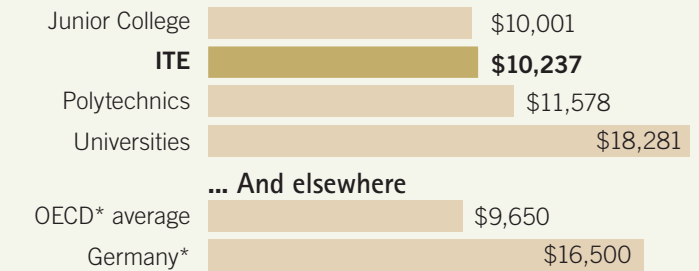
- » Higher Nitec in Hospitality Operations*
- » Higher Nitec in Business Administration (Event Management)
- » Nitec in Applied Food Science Production
- » Nitec in Fitness Training
- » Nitec in Security Technology
- » Nitec in Digital Media Design (Digital Video Effects)

* Students obtain one of two certificates upon graduation: Nitec (National ITE Certificate) or Higher Nitec. Higher Nitec allows a graduate to bypass his first year in polytechnic in some cases.

Most polytechnics have a 1:15 to 1:16 teacher-student ratio

GOVERNMENT SUBSIDY

Government spending annually per student in Singapore



*The OECD, or Organisation for Economic Cooperation and Development, groups the world's richest and most economically progressive countries. Germany is regarded as the world's leading vocational education nation.

APPROVAL RATING

Perception of ITE by target groups

Opinion makers	1997 (%)	2007 (%)	% change
General public	23	45	+96
Employers	34	71	+109
N- and O-level teachers	46	72	+57
Parents with N- and O-level children	20	46	+130
Prospective students			
O-level students	39	64	+54
N-level students	36	58	+61
Internal constituents			
ITE students	56	83	+48
ITE graduates	44	76	+73
ITE lecturers	66	89	+35
AGGREGATE	34	60	+76